

The University of New Mexico

**Bookings on Citable
Charges:
An Analysis of Arrests and
Bookings in the
Metropolitan Detention
Center**

**Prepared for the Public Safety
Division, Bernalillo County**

August 2014

Gary Johnston
Paul Guerin, PhD

Introduction

The purpose of this study is to determine the number of persons who are arrested and booked in the Metropolitan Detention Center on a citable offense. The classification of a citable offense is a crime committed where an officer, at their discretion, could issue the offender a citation as opposed to arrest and booking. These citable charges are considered minor offenses and typically listed as petty misdemeanors in the New Mexico Criminal and Traffic Law Manual and/or are traffic offenses. Citable offenses do not include warrants of any type. With the ongoing issues of jail crowding in the U.S. and Bernalillo County as well as the national and local debate surrounding who belongs in detention facilities, arrests for such offenses may exacerbate the issue of overcrowding and cost the county and state additional dollars for housing these offenders, who will be released for these crimes. To investigate the incidence and rate of arrest for petty misdemeanors, we analyzed data collected from a monthly report of bookings of citable charges, over a period of 11 months beginning July 2013 and concluding May 2014. Because of errors in the report it was necessary to review the bookings by statute and description to ensure the list only included citable offenses. After removing any bookings where the offense was incorrectly categorized as a petty misdemeanor, there were a total of 713 separate bookings, which are all considered by the State of New Mexico or the City of Albuquerque to be petty misdemeanors or citable traffic offenses. This was the highest charge. It is from these 713 total charges that the data was extrapolated for this report.

We categorized petty misdemeanor arrests into 5 categories: drug, public order, property, traffic, and violent crimes. Based on these categories we calculated the most frequent types of crimes in each category, the number of arrests for each category in a particular month, the average length of stay overall, and the average length of stay for each category. A complete listing of the charges can be found in Appendix A.

Results

From the data collected, we have been able to determine that individuals arrested for a citable offense were housed in MDC for an average of 3.0 days. For the five categories of petty misdemeanors and traffic offenses we found property and public order crimes comprised the largest number citable arrests and bookings. Table 1 reports the categories of charges and the property and public order categories make up 91.4% of all arrests for petty misdemeanors and traffic offenses.

Table 1 Booking Charge Categories

	Count	Percent
Drug	10	1.4
Property	430	60.3
Public Order	222	31.1
Traffic	49	6.9
Violent	2	0.3

For the category of property crimes, the most frequent arrest was for the crime of shoplifting/larceny under \$250, which accounted for 405 of the total 713 petty misdemeanor arrests and made up 94% of all property related crimes. In Table 2 the top 3 arrests of property categories are shown.

Table 2: Top 3 Crimes for Property Category

	Count	Percent
Shoplifting/Larceny \$250 or less	405	94.2
Criminal damage to property	14	3.3
Fraud \$250 or less	8	1.9
All other crimes	3	0.70

For the category of public order crimes the most frequent arrest was for the crime of drinking in public, which accounted for 76 of the total 713 petty misdemeanors, and made up 34% of all public order related crimes. From Table 3 it can be seen that close behind drinking in public was criminal trespass and disorderly conduct/urinate with 47 and 33 arrests respectively.

Table 3: Top 3 Crimes for Public Order Category

	Count	Percent
Drink/any public way	76	34.2
Criminal trespass	47	21.2
Disorderly conduct/urinate	33	14.9
All other crimes	66	30.0

Overall the Albuquerque Police Department (APD) accounted for the largest number of arrests for petty misdemeanor and traffic crimes accounting for 663 or 93% of all arrests on citable charges as seen in Table 4. APD accounts for approximately 80% of all bookings.

Table 4: Agency

	Count	Percent
Albuquerque Police Department	663	93.0
Bernalillo County Sheriff's Office	40	5.6
New Mexico State Police	6	1.0
Sandia Pueblo Tribal Police	1	.1
University of New Mexico Police Department	2	.3

Beginning in February 2014 and continuing through May 2014, there has been a decrease in the number of bookings that have occurred for all petty misdemeanors and traffic arrests as depicted in Figure 4.

Figure 4: Total Count of Citable Offenses by Month

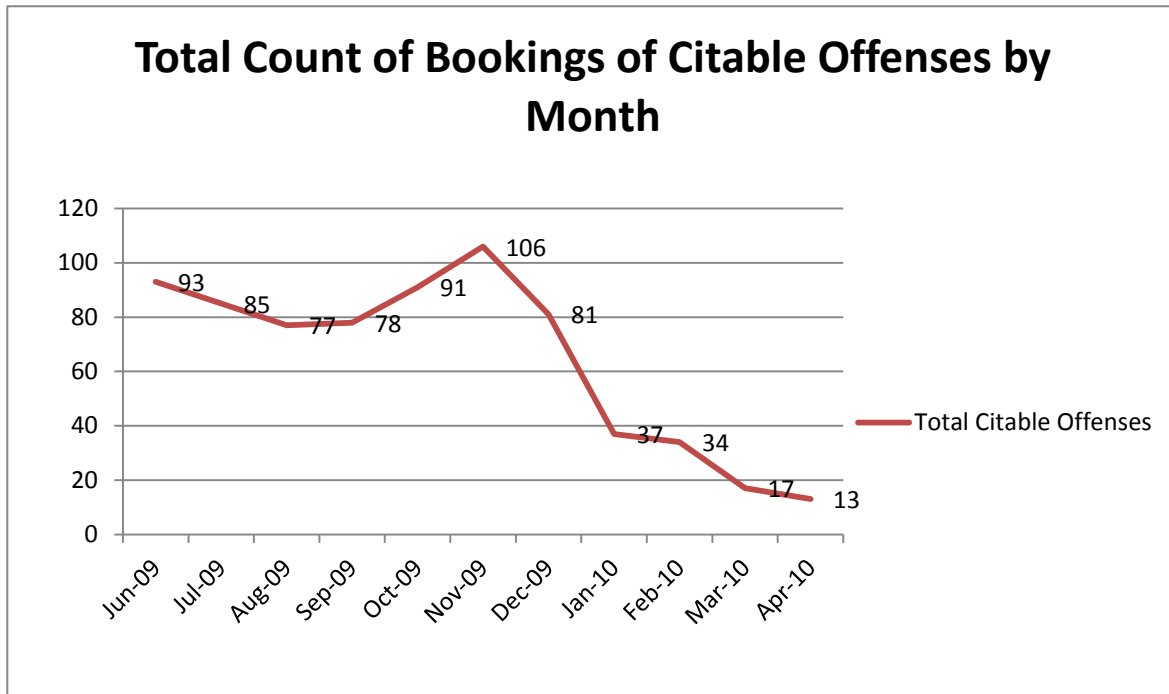
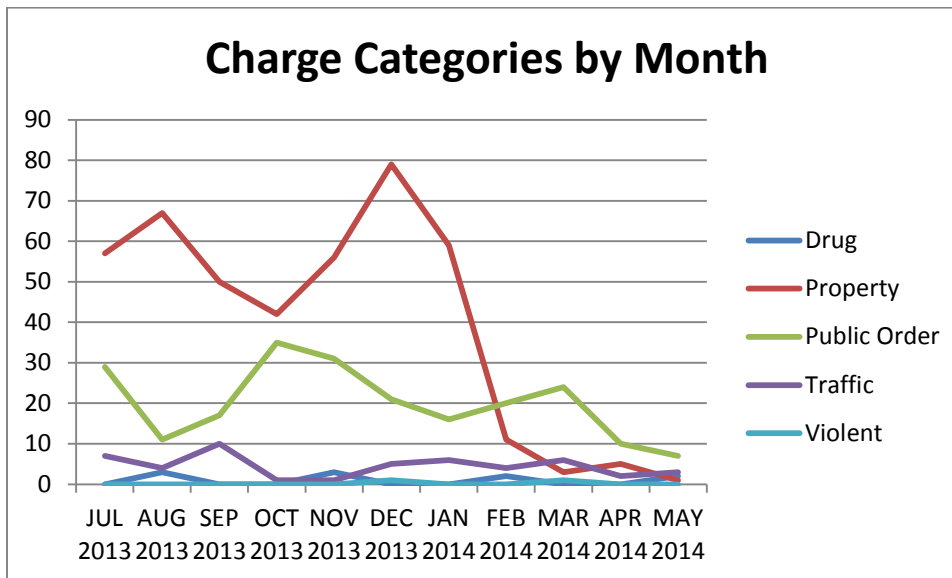


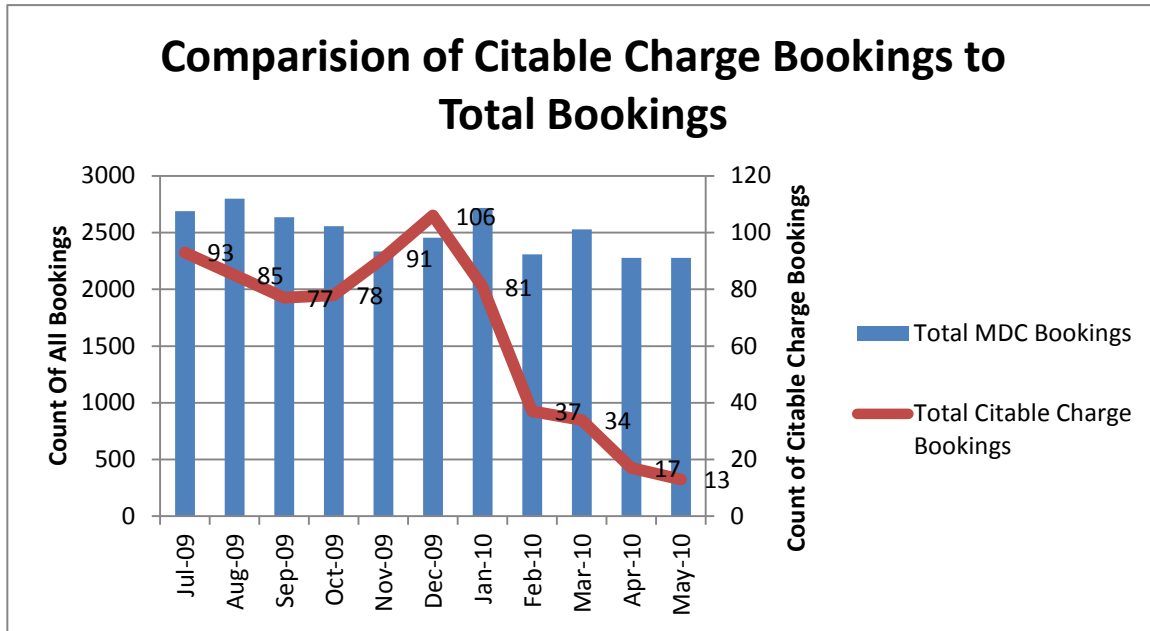
Figure 5 shows the percent of arrests by charge category by month. The decline in the number of bookings for the largest categories, property and public order can clearly be seen.

Figure 5: Percentage of Arrests by Category on Monthly Basis



It is worthwhile to note, that the category of traffic is the third largest arrest category, albeit it is a smaller percentage of only 6.9%, as shown in Table 1. To compare the rates of bookings of citable charges to overall bookings at the Metropolitan Detention Center, we analyzed the totals of all citable offense categories per month to the total number of bookings per month, as can be seen in Figure 6.

Figure 6: Count of Bookings on Citable Charges to Total Bookings Overall by Month



From the graph it is evident that petty misdemeanors and traffic offenses make up a small number of bookings overall per month in the Metropolitan Detention Center.

Conclusion

As evidenced from the 11 months of data collected, bookings on citable charges make up an average of 2.5% of all bookings in the Metropolitan Detention Center. Overall this is a small number of individuals who are being booked on a monthly basis for petty misdemeanors and traffic offenses and who on average spend approximately 3 days in the MDC. However, due to the fact that these individuals are being booked on what are typically considered minor offenses, it may be prudent to evaluate other possible alternatives to jailing individuals for petty misdemeanors and traffic offenses. By exploring alternate avenues it may be possible to reduce costs, provide additional beds for individuals with higher offenses, and help further relieve crowding in the jail.

APPENDIX A:

Attachment 1: Categorized Booking Charges

	Statute	Drug	Property	Public Order	Traffic	Violent
Commercial motor vehicles equipment regulations	65-3-9E39371	0	0	0	1	0
Conceal identity	12-2-16	0	0	2	0	0
Criminal damage to property	30-15-1.1/ 12-1-3-1	0	14	0	0	0
Criminal trespass	12-2-3	0	0	47	0	0
Disorderly conduct/urinate	30-20-1B/ 12-2-5G/ 16-2-32GC	0	0	33	0	0
Drink/any public way	12-4-8B/ 12-1-4-9/ 12-4-8D	0	0	76	0	0
Drive on suspended license	66-5-39.1	0	0	0	22	0
Fail to signal	66-7-325	0	0	0	1	0
False obtain services \$250 or less	30-16-16/ 12-3-9	0	0	12	0	0
False report	12-2-15	0	0	4	0	0
Fraud \$250 or less	30-16-6	0	8	0	0	0
Headlamp required	66-3-802A/ 66-3-804	0	0	0	2	0
Inhale volatile solvents	12-4-13	1	0	0	0	0
Leave scene accident/strike	66-7-205	0	0	0	1	0
Litter	30-8-4	0	0	8	0	0
No drivers license or motorcycle endorsement	66-5-2	0	0	0	1	0
No evidence of vehicle registration	66-3-13	0	0	0	2	0
No license plate/expired	66-3-805B(1)/ 66-3-18(1)	0	0	0	3	0
No proof of insurance	66-5-229C/ 66-5-205B	0	0	0	5	0
Obedience to police/fire	12-1-2-20/ 66-7-4	0	0	2	0	0
Offenses by children	12-5-5	0	0	4	0	0
Park operation policy	11-2-9/ 11-2-9A	0	0	2	0	0
Pedestrian solicit rides/business	66-7-340/ 8-2-7-2	0	0	18	0	0
Possession marijuana under 1 oz	30-31-23F/ 12-4-9	9	0	0	0	0

Possession of fireworks	12-2-12	0	0	1	0	0
Possession open container	66-8-138	0	0	1	0	0
Propulsion of missiles	12-2-11	0	0	0	0	1
Public affray	2-5G	0	0	2	0	0
Public nuisance	12-2-21/ 30-8-1	0	0	6	0	0
Receiving stolen property \$250 or less	30-16-11/ 30-16-11D	0	3	0	0	0
School zone speed limit 1	66-7-301(1)	0	0	0	1	0
Seat belt must be worn	66-7-372	0	0	0	1	0
Shoplifting/Larceny \$250 or less	30-16-1/ 30-16-20/ 12-2-16/ 12-3-2	0	405	0	0	0
Speeding (1-15 MPH over)	66-7-301	0	0	0	3	0
Unlawful carry deadly weapon	12-2-8	0	0	0	0	1
Unreasonable noise	12-2-4	0	0	3	0	0
Vehicle/pedestrian not to interfere with traffic	66-3-852/ 8-2-1-33	0	0	0	6	0
Wrongful use of public property	30-14-4F	0	0	1	0	0
TOTALS		10	430	222	49	2